



Multiple Application Platform Server

MAPS 5.4 Release Guide

Product version 5.4

Last updated 7/21/2017

Trademark, Publishing Statement, and Copyright Notice

© 1998-2017 Evisions, Inc. All rights reserved.

This software and related documentation are provided under a license agreement containing restrictions on use and disclosure and are protected by intellectual property laws. No part of this document may be reproduced, stored in or introduced into a retrieval system, or transmitted in any form or by any means (electronic, mechanical, photocopying, recording, or otherwise), or for any purpose, without the express written permission of Evisions, Inc.

The information contained herein is subject to change without notice and is not warranted to be error-free. Product features referenced herein for a period of time may not match product contents. Evisions, Inc. does not warrant that the functions contained in the software will meet your requirements or that the operation of the software will be uninterrupted or error free. Evisions, Inc. reserves the right to make changes and/or improvements in the software without notice at any time.

This software and documentation may provide access to or information on content, products, and services from third parties. Evisions, Inc. and its affiliates are not responsible for and expressly disclaim all warranties of any kind with respect to third-party content, products, and services. Evisions, Inc. and its affiliates will not be responsible for any loss, costs, or damages incurred due to your access to or use of third-party content, products, or services. Evisions, Inc. does not endorse the content or developer of any products or web sites mentioned.

All information in this guide is designed for instructional purposes only. Evisions, Inc. makes no guarantees regarding the accuracy or performance of any techniques used in this guide. Software configurations and environments may vary, and some techniques used in this guide may not operate efficiently under all configurations. This guide may contain examples of various technologies or products, which are the sole property and responsibility of their creators.

Trademarks are the property of the respective owners for any products mentioned herein.

Table of Contents

Table of Contents	3
What's New in MAPS 5.4?	4
MAPS Updates	4
Product versions	4
Installation	4
1. Prepare test environment and ensure current backup	4
2. Check for updates	4
3. Allow update process to complete	5
4. Verify the latest version is installed	5
MAPS 5.4 Release Notes	6
Enhancements	6
Resolved Issues	7
Getting Help	8

What's New in MAPS 5.4?

Evisions is pleased to announce the release of MAPS version 5.4, which includes the following changes:

- When an email is stuck in the MAPS queue due to a transmission error, you can now edit an invalid email address so the email can be resent.
- When configuring an LDAP server, you can now edit the default user search class of "objectClass=user" for authentication sources that use different object classes.
- Added search boxes to the Users, LDAP Resource Users, Groups, Data Connections, and Schedules screens to allow you to find items more easily.
- Improved the process for binding the ports used for HTTP, HTTPS, and TCP to reduce issues if the ports are not released in a timely manner after the nightly restart.
- Resolved an issue where the message "Error while removing HTTP client: Unable to acquire a read lock to use the MAPS configuration database" was occasionally appearing in the MAPS log file around the time of the nightly backup, which sometimes required a manual restart of the MAPS service.
- Additional enhancements and resolved issues.

We appreciate the feedback received from all of our users. Our products would not be what they are today without your continued support. If you have any comments or suggestions, please do not hesitate to [open a HelpDesk ticket](#) and let us know.

MAPS Updates

MAPS 5.4 is an update to the MAPS service (which includes the eLauncher) and the MAPS Config. You should upgrade both components concurrently.

[Product versions](#)

The latest versions of MAPS included in this release are:

- MAPS service 5.4.0.1602 / MAPS Config 5.4.0.857 / eLauncher 5.4.0.1

Installation

[1. Prepare test environment and ensure current backup](#)

We highly recommend installing updates in a test environment before applying them to your production environment. You should make sure that a current backup is available in case of any unforeseen issues. To create a full backup of your MAPS environment, go to the **Server** -> **Backups** screen in MAPS and click **Backup Now**.

[2. Check for updates](#)

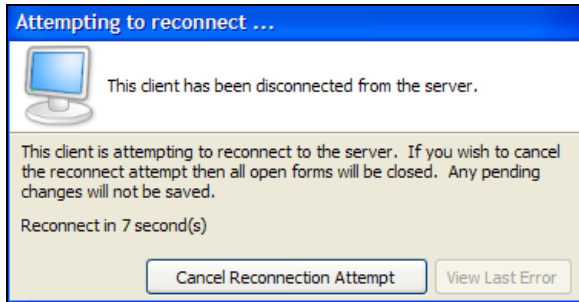
Click the **Check for Updates** button in the MAPS Configuration tool to view available updates.

If you are not already running MAPS 4.x, please refer to the [MAPS 4.0 Upgrade Guide](#) for instructions prior to proceeding with this upgrade.

It is possible to apply updates when users are on the system; however, to avoid the possibility of losing unsaved work we recommend applying updates during off hours.

[3. Allow update process to complete](#)

When applying updates to the MAPS service you will be temporarily disconnected from the server:



The update process may take a few minutes to complete. **Do NOT cancel the reconnection attempt or manually restart the server.** You will automatically be reconnected to the server once the update has been applied.

[4. Verify the latest version is installed](#)

To ensure that you are on the most current version, continue clicking the **Check for Updates** button and applying the updates until no new updates are available.

[Please Provide Us with Your Feedback!](#)

As always, we welcome any [feedback or suggestions](#) you may have. We very much appreciate your thoughts and suggestions, so please keep the great ideas coming!

MAPS 5.4 Release Notes

MAPS Service 5.4.0.1602 / MAPS Config 5.4.0.857 / eLauncher 5.4.0.1

Enhancements

Area	Description	Issue number
Applications	Removed Windows XP from the list of supported operating systems. The MAPS applications currently run on Windows XP; however, any users who are still on this operating system should be aware that Microsoft's extended support period ended on April 8th, 2014 and we may therefore be unable to resolve issues with running our software on Windows XP should they occur in the future.	MAPS-1348
Applications	Removed Windows Vista from the list of supported operating systems. The MAPS applications currently run on Windows Vista; however, any users who are still on this operating system should be aware that Microsoft's extended support period ended on April 11th, 2017 and we may therefore be unable to resolve issues with running our software on Windows Vista should they occur in the future.	MAPS-1363
Diagnostics	When performing a functional or automatic backup, MAPS now stores a copy of the diagnostic information in a server_diagnostics.txt file in the backup directory.	MAPS-948
Email	Removed the character limit for the "To:" field when sending emails. Previously, only 128 characters were allowed for the email address(es).	MAPS-1460
Email	When an email is stuck in the MAPS queue due to a transmission error, you can now edit an invalid email address so the email can be resent.	MAPS-1050
HTTP/HTTPS	Improved the process for binding the ports used for HTTP, HTTPS, and TCP to reduce issues if the ports are not released in a timely manner after the nightly restart. Instead of failing after 5 attempts several seconds apart, MAPS now waits 60 seconds before attempting to bind the port again, and continues until success. If the port is unavailable, MAPS now adds useful debugging information to the log file.	MAPS-1490
Help	The "What's New" link in the eLauncher now always opens the latest version of the page regardless of the version of the eLauncher you are running.	MAPS-1458
Help	When opening the help from within MAPS, you will now always be taken to the latest version of the help regardless of your installed MAPS version.	MAPS-1375
LDAP	When configuring an LDAP server, you can now edit the default user search class of "objectClass=user". This provides better support for authentication sources that use object classes other than the default. Previously, using such a server required adding all users to MAPS individually.	MAPS-453
Scheduling	When editing a schedule, the dialog now indicates if the "Run schedule as this user" field is being overridden by a system-level Run As user on the Scheduling -> Configuration screen.	MAPS-1330
User interface	Added search boxes to the Users, LDAP Resource Users, Groups, Data Connections, and Schedules screens to allow you to find items more easily.	MAPS-1077

Resolved Issues

Area	Description	Issue number
Data connections	Selecting the entire contents of a multi-column list box was taking significantly longer when using a native database connection than it did when using an ADO connection.	MAPS-1472
LDAP	When using an LDAP server that did not have the "objectClass=user" user search class, users were unable to log in after the upgrade to MAPS 5.0 even when they had been added to MAPS as individual users. This issue was resolved as part of the enhancement to support custom object classes (MAPS-453).	MAPS-1409
Scheduling	After clicking the Refresh button at the top of the Scheduling screen in MAPS Config and then editing any schedule, the Maximum Timeout field in the schedule was displaying as "Use default" regardless of the actual value. This was a display issue only; the value in the database was not changed.	MAPS-1376
Security	When changing the password on the Driver Properties screen of a data connection, the old and new passwords were being logged in the auditing tables in the MAPS and Data Warehouse databases. The auditing records now just state that the password was changed.	MAPS-1475

Getting Help

For information on using the software, please refer to the in-product Help, which contains detailed information on all aspects of the product.

If you are having problems with the installation or configuration, you can search our knowledge base of common issues and their resolutions at <http://helpdesk.evisions.com>. If you are unable to find the solution, submit a HelpDesk request with a detailed explanation of the problem you are experiencing.

Please do not hesitate to contact the Evisions HelpDesk if any questions or problems arise. We are here to help you and want to ensure your success.

If you find that areas of this documentation could benefit from additional detail or clarification, please let us know. We are constantly trying to improve the installation process to make it as easy as possible.